

# HOW TO SORT YOUR WASTE

IN LYNGBY-TAARBÆK

## IT'S EASIER THAN YOU THINK

We have given you a new recycling bin to make it easy for you to sort paper, glass, metal, and plastic from your household waste.

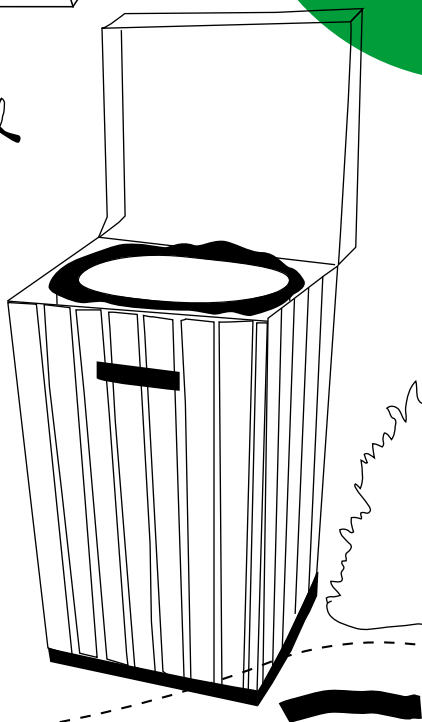
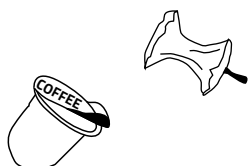
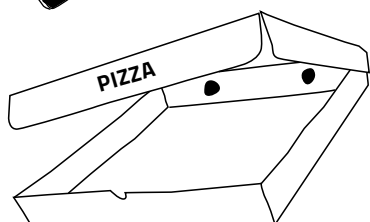
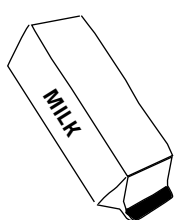
Important values are hidden in sorted waste. That is why it is important to recycle as much of it as possible, and for this purpose we urge you to use your new container.



# COLLECTION OF HOUSEHOLD WASTE CONTINUES AS USUAL

You can still use your usual your usual bin for the non-recycling waste.

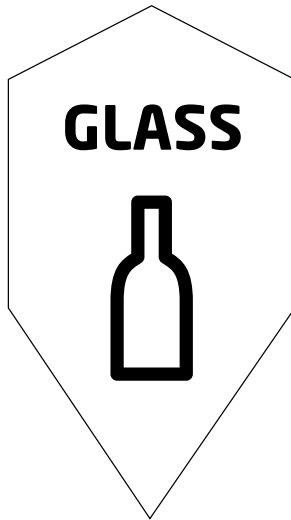
---



## Collection every second week

We empty your new recycling bin and your waste bin on the same weekday every second week.

Go to [www.ltf.dk/affald](http://www.ltf.dk/affald) and click Self service to see which days your bins are collected or join our sms-service.



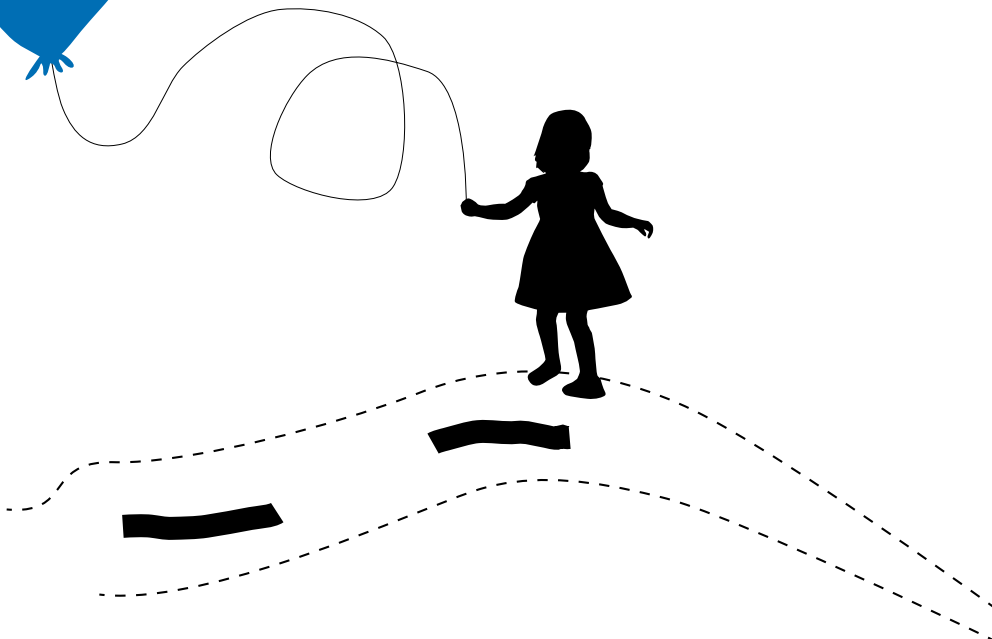
## YES, PLEASE

- Wine bottles
- Beer bottles
- Glass bottles
- Jars
- Large pieces of broken glass
- Drinking glasses

## NO THANKS TO

- Ovenproof dishes
- Pottery
- Porcelain
- Window glass
- Mirrors
- Light bulbs

You can take the window glass and mirrors to the recycling centre. Ovenproof dishes, pottery, porcelain, and light bulbs can go in your red box for hazardous waste.





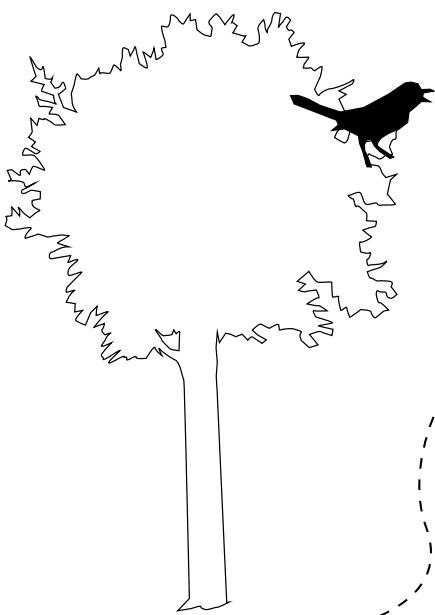
## YES, PLEASE

- Cans
- Beer and soda cans
- Metal lids
- Tea light holders
- Aluminium foil and tinfoil
- Foil trays
- Cutlery and scissors

## NO THANKS TO

- Frozen food bags and crisps bags
- Spray cans, e.g. hair spray and paint
- Tubes from, e.g. marmite or paint
- Electronics, e.g. mobile phones or toasters
- Metal from engines etc.
- Cables

Put electronics and spray cans in your red box for hazardous waste.



REMEMBER TO ONLY PUT METAL WASTE THAT EASILY FITS INTO THE METAL COMPARTMENT OF THE BIN





## YES, PLEASE

- Plastic bottles
- Plastic tubs
- Plastic fruit and vegetable trays
- Plastic meat trays (rinsed)
- Bubble wrap
- Flower pots
- Plastic bags
- Cling film

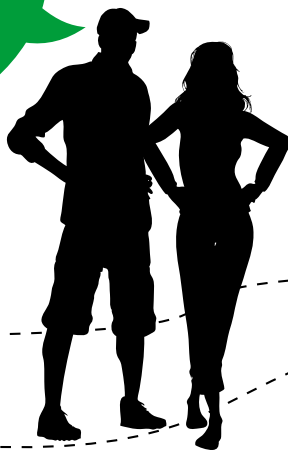
**REMEMBER** that both soft and hard plastics can be recycled.

## NO THANKS TO

- Foam packaging, for example food boxes and cups
- Rubber boots and rain wear
- Swim rings
- Bathing pools
- Rubber
- Melamine bowls and other products made of melamine

Put these items as well as paint tubs and bottles from chemical products in the red box for hazardous waste.

REMEMBER TO GIVE  
PACKAGING WITH FOOD  
REMAINS A QUICK RINSE  
IN COLD WATER BEFORE  
RECYCLING IT





## YES, PLEASE

- Newspapers
- Magazines
- Advertisements
- Printer paper
- Writing and drawing paper
- Envelopes
- Photocopies

**REMEMBER** that crumpled and torn paper can be recycled as long as it is dry and clean.

## NO THANKS TO

- Milk and juice cartons
- Cardboard and carton
- Pizza boxes
- Gift wrapping
- Egg boxes
- Books
- Plastic-wrapped advertisements

These items go in the waste bin.

1 NEWSPAPER CAN  
BE TRANSFORMED  
INTO 35 EGG  
BOXES

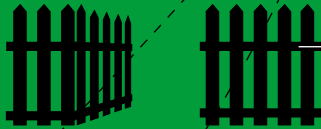


# EASY ACCESS TO YOUR BINS

On collection day, **please place your recycling bin with the handles and wheels facing you** so it is easy for the garbage man to wheel it off.



Make sure the foundation of the pathway is **smooth and solid**, e.g. by using pavestones or heavily stamped gravel. Please refrain from using pebbles, chippings or loose gravel.



If you have a **gate**, it needs to be able to stay open by itself, when the garbage man collects your bin.

The pathway must not have more than **10 centimeter slope per meter**, and it must be free of bumps, steps, or stairs.

The pathway must be at least **1 meter wide** and must be free of obstacles at least **2 meters** above the ground.

If your recycling bin is placed at a spot that does not fulfill these requirements, please put it by the sidewalk at the latest at **seven o'clock on the morning of the collection day**.



## CONTACT

If you have any questions about how to sort your waste, please visit [visortererogså.dk](http://visortererogså.dk) or email us at [forsyning@ltf.dk](mailto:forsyning@ltf.dk).

If you have issues with your waste or recycling plan, you can inform Lyngby Taarbæk Utilities.

- at [www.ltf.dk](http://www.ltf.dk) – Self service
- by phone 72 28 33 60

